



# RSAD1 Polyclonal Antibody

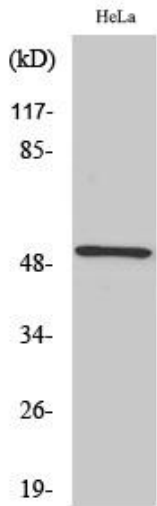
<b>Catalog No</b>	YP-Ab-04180
<b>Isotype</b>	IgG
<b>Reactivity</b>	Human;Mouse
<b>Applications</b>	WB;IHC;IF;ELISA
<b>Gene Name</b>	RSAD1
<b>Protein Name</b>	Radical S-adenosyl methionine domain-containing protein 1 mitochondrial
<b>Immunogen</b>	The antiserum was produced against synthesized peptide derived from human RSAD1. AA range:298-347
<b>Specificity</b>	RSAD1 Polyclonal Antibody detects endogenous levels of RSAD1 protein.
<b>Formulation</b>	Liquid in PBS containing 50% glycerol, 0.5% BSA and 0.02% sodium azide.
<b>Source</b>	Polyclonal, Rabbit,IgG
<b>Purification</b>	The antibody was affinity-purified from rabbit antiserum by affinity-chromatography using epitope-specific immunogen.
<b>Dilution</b>	WB: 1/500 - 1/2000. IHC: 1/100 - 1/300. ELISA: 1/5000.. IF 1:50-200
<b>Concentration</b>	1 mg/ml
<b>Purity</b>	≥90%
<b>Storage Stability</b>	-20°C/1 year
<b>Synonyms</b>	RSAD1; Radical S-adenosyl methionine domain-containing protein 1; mitochondrial; Oxygen-independent coproporphyrinogen-III oxidase-like protein RSAD1
<b>Observed Band</b>	52kD
<b>Cell Pathway</b>	Mitochondrion .
<b>Tissue Specificity</b>	Adipose tissue,Blood,Colon,Embryo,Placenta,
<b>Function</b>	cofactor: Binds 1 4Fe-4S cluster. The cluster is coordinated with 3 cysteines and an exchangeable S-adenosyl-L-methionine .,function: May be involved in porphyrin cofactor biosynthesis.,similarity: Belongs to the anaerobic coproporphyrinogen-III oxidase family.,
<b>Background</b>	cofactor: Binds 1 4Fe-4S cluster. The cluster is coordinated with 3 cysteines and an exchangeable S-adenosyl-L-methionine .,function: May be involved in porphyrin cofactor biosynthesis.,similarity: Belongs to the anaerobic coproporphyrinogen-III oxidase family.,
<b>matters needing attention</b>	Avoid repeated freezing and thawing!



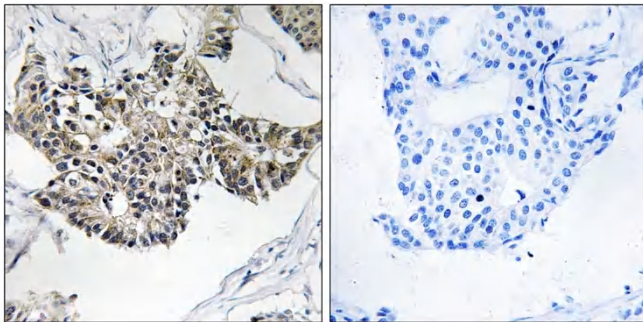
**Usage suggestions**

This product can be used in immunological reaction related experiments. For more information, please consult technical personnel.

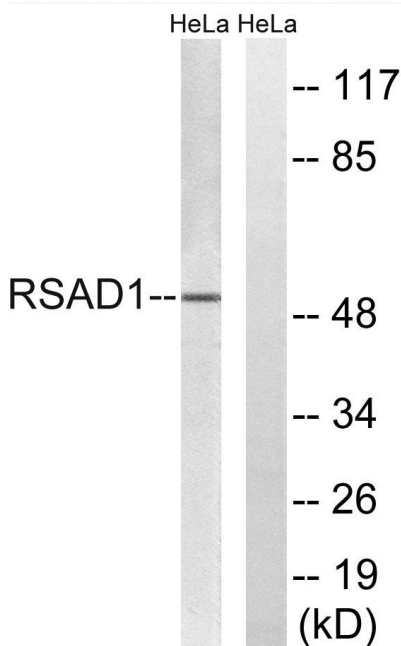
**Products Images**



Western Blot analysis of various cells using RSAD1 Polyclonal Antibody



Immunohistochemistry analysis of paraffin-embedded human breast carcinoma tissue, using RSAD1 Antibody. The picture on the right is blocked with the synthesized peptide.



Western blot analysis of lysates from HeLa cells, using RSAD1 Antibody. The lane on the right is blocked with the synthesized peptide.